

Our Mission

The Minnesota Clinical Research Alliance (MCRA) supports clinical research in Minnesota. We will work together to provide clinical research education and support for elected officials, the media, manufacturers, vendors, service providers and academic partners.

We will focus on defining clinical research in easily understandable terms that educate all to the instrumental role our industry plays in healthcare and the economy. Patient safety and clinical research integrity are the foundation of our efforts.

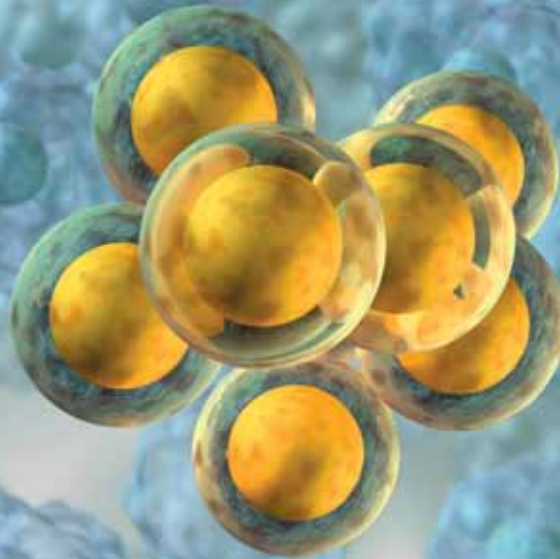
It is our mission to be recognized nationally and internationally as a leader in patient care, innovation and collaboration for the benefit of our patients.

Fast Facts

- ▶ In 2010, Minnesota was home to 1,742 active clinical trials or 11% of the 15,134 trials in the United States.¹
- ▶ Minnesota clinical research is concentrated on: Cancers – 914, Diabetes – 80, Cardio Vascular – 123, HIV / AIDS – 31, Mental and Behavioral – 57, Rare Diseases – 592, Respiratory – 194.²
- ▶ Minnesota has the highest number of investigational medical device and FDA pre-market approvals of medical devices per capita.³
- ▶ Minnesota is consistently in the Top Two among states for patent registration in medical devices.⁴ From 2004 – 2009, Minnesota ranked 6th nationally in Bioscience and related patents with 4,608.⁵
- ▶ Minnesota companies registered 358 drug patents (2002-2006); and 29 companies have prescription and OTC drugs currently listed with the FDA.⁶
- ▶ Minnesota's high-tech employment has exploded since the 1990s. Today, more than 8,000 high-tech firms employ nearly 270,000 skilled workers. The state also boasts the second highest number of medical technology jobs in the nation. Just a few of the world-renowned high-tech companies that call MSP home for corporate headquarters include 3M, Medtronic, St. Jude Medical, H.B. Fuller, Ecolab, and Imation.⁷

^{1,2} Archstone Consulting, <http://www.pharma.org/sites/default/files/minnesota.pdf>
^{3,4,6} Minnesota Department of Employment and Economic Development (DEED)
⁵ Battelle, http://www.bio.org/local/battelle2010/MINNESOTA_profile.pdf
⁷ Minneapolis Regional Chamber Development Foundation, <http://www.metromsp.org/About/workforce.htm>

Finding the Cures of Tomorrow, Today.



MCRA
Minnesota Clinical Research Alliance
WWW.MNCLINICALRESEARCH.ORG

MCRA
Minnesota Clinical Research Alliance
WWW.MNCLINICALRESEARCH.ORG



Finding the Cures of Tomorrow, Today.

Partners

Agility Research
www.agilityresearch.org
CCL CL DM I-IV PM
C

Centralized cardiac safety and arrhythmia trials, mobile cardiac outpatient telemetry, data collection, analysis, data management, comprehensive device and technology provisioning, world-wide trial capability and experience, Phase I-IV trials, trial design support.

Daniel S. Pawlik,
 VP Business Development
 763-780-9808
dpawlik@agilityresearch.org

Clinical Research Institute
www.criminnesota.com
BA CL I-IV PM PC
N RSP RH

Allergic diseases (allergic rhinitis, urticaria, food allergy), asthma, COPD, migraine headache and vaccine studies. 4 physician investigators, 2 fully manned research sites.

Dedicated certified research coordinators and research recruiting assistants. Have conducted over 700 clinical trials in past 25 years. Extensive research and clinic data base.

Gary Berman, MD/PI/CFO
 612-333-2200
cri@criminnnesota.com

Courante Oncology
www.couranteoncology.com
DM I-IV REG
ONC

A clinical research service provider specializing in oncology product development offering a wide range of clinical trial management and support services to the pharmaceutical and medical device industries, including project management, clinical site monitoring, quality assurance, and medical writing services. Our strength lies in our collective experience and ability to adapt to our clients' specific research needs.

Sheri Smith
 952-908-9986
ssmith@couranteoncology.com

Frestedt Inc.
www.frestedt.com
BA DM I-IV PM PC REG
C D GI HE N O ONC OST RSP

A unique virtual clinical research organization (vCRO) designed to foster the growth of medical device, pharmaceutical and food companies by providing a network of industry experts to collaborate in the creation of targeted, cost effective, efficient and value driven research solutions.

Clinical, regulatory and quality affairs service provider.
 Dr. Joy Frestedt
 612-219-9982
jf@frestedt.com

MEDTOX Laboratories
www.medtox.com/clinicaltrials
BA CL
C D GI HE N O ONC OST RSP RH

Central laboratory, bioanalytical, biomarkers, flow cytometry, anatomic pathology, molecular diagnostics and microbiology.

Mike Bunkers
 651-628-6191
mbunkers@medtox.com

Minnesota Center for Obesity, Metabolism & Endocrinology
www.mncome.com
DM I-IV PC REG
O

Providing comprehensive health care and education for patients with endocrine diseases, and their families.
 Becky Gonzalez-Campoy
 651-379-1612
becky@mncome.com

Minnesota Gastroenterology
www.mngastro.com
CL I-IV PM PC
GI

Minnesota Gastroenterology, PA., (MNGI) is a nationally recognized leader in gastroenterology diagnosis and care. MNGI patients are some of the first to receive new gastrointestinal

therapies and treatments, many of which are available only through clinical research studies. Our studies target conditions of the upper and lower GI tract and are conducted under the supervision of a highly experienced research team including gastroenterologists, nurse practitioners, physician assistants and certified clinical research coordinators.

Robert McCabe,
 Medical Director of Research
 612-870-5599
mcarland@mngastro.com

Prism Clinical Research
www.prismresearchinc.com
I-IV PC
C D GI HE N O OST RSP RH

Prism Research is a 52-bed inpatient facility located in the center of Minneapolis/St. Paul Metropolitan Area. Prism Research specializes in first in man and complex inpatient clinical trials with a diverse disease based, volunteer database.

Jeff Cosgrove
 651-641-2914
jcosgrove@prismresearchinc.com

The Greenlight Group, LLC
www.greenlightgroup.biz
DM REG
C N RSP

An international clinical research consulting firm that provides monitoring, auditing, FDA inspection support, quality systems support and project management services to pharmaceutical companies and their vendors. With offices in Minneapolis,

MN and Brussels, Belgium, we are positioned to meet your global research needs.

Sarah Moeller
 612-306-8849
 +32 (0)4 97 36 5509
moeller_consulting@yahoo.com

Ridgeview Research
www.ridgeviewmedical.org/research
BA CL I-IV PM
C D GI HE N O OST RSP

Since 1993, Ridgeview Research, a division on Ridgeview Medical Center, has conducted more than 200 studies, randomizing over 3,000 participants. Ridgeview Research has a reputation for quality data, exceptional performance, reliability and efficacy. Our commitment to quality, ethical and personal care has resulted in high patient satisfaction and retention.

Stephanie Svoboda, PharmD
 952-556-2686
research@ridgeviewmedical.org

Twin Cities Clinical Research
www.twincitiesclinicalresearch.com
CCL CL DM I-IV PM
C D HE O OST

Twin Cities Clinical Research was founded in 1982 by Kidney Specialists of Minnesota, P.A. With a commitment to conducting high-quality clinical studies for the pharmaceutical industry, Twin Cities Clinical Research has completed more than 300 studies since inception.

Jane M. McGinley, RN, CCRC
 763-746-9010
jmcginley@tccrmn.com

Affiliates

The BioBusiness Alliance of Minnesota
www.biobusinessalliance.org

The BioBusiness Alliance of Minnesota is a nonprofit organization representing Minnesota companies, academia, and government, devoted to: building the bioscience industry; retaining and creating jobs; and positioning Minnesota as a global leader in biobusiness with the ultimate goal of improving economic, health, social, and environmental well-being.

Cheryl Matter, PhD
 952-746-3849
cmatter@biobusinessalliance.org

LifeScience Alley
www.lifesciencealley.org

Our mission: Enabling business success in the life sciences through leadership, collaboration, innovation, advocacy and education.

Frank Jaskulke
 952-542-3077
fjaskulke@lifesciencealley.org



LEGEND	
Specialty Services	Populations
BA BioAnalytical	C Cardiac
CCL Central Core Lab (Cardiac, Imaging)	D Diabetes
CL Centralized Lab	GI GI
DM Data Management and Monitoring	HE Healthy/Healthy Elderly
I-IV Phase I-IV	N Neuro
PM Post-Market	O Obesity
PC Pre-Clinical	ONC Oncology
REG Regulatory IND/NDA Filing	OST Osteoporosis
	RSP Respiratory
	RH Rhinal